

# MONTHLY MEMBERSHIP PROGRESS REPORT

LOCATION INDIA

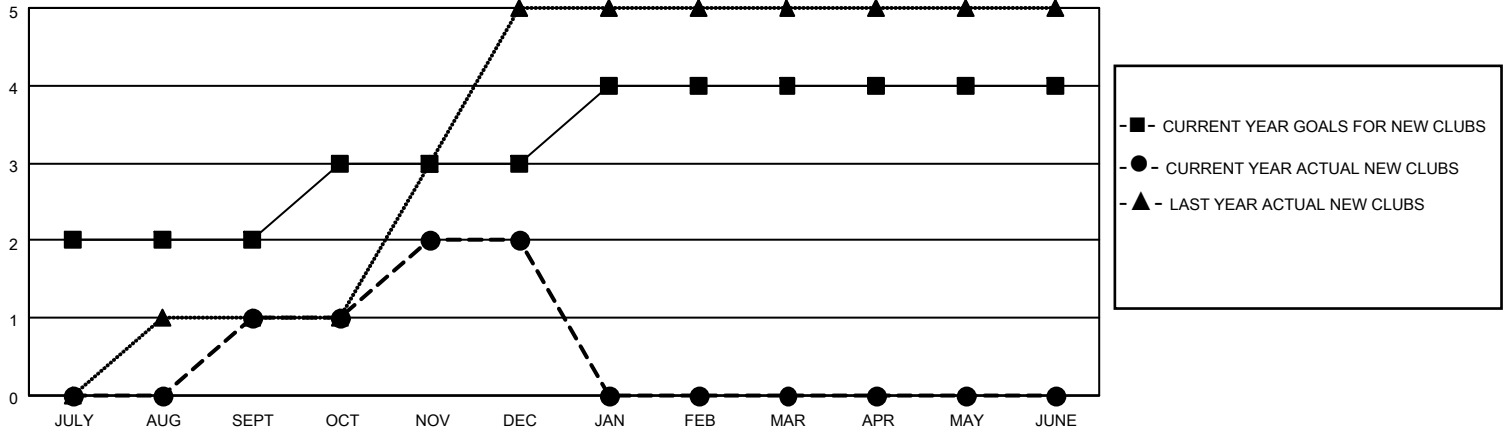
District 322 D

Results as of: 12/31/2021

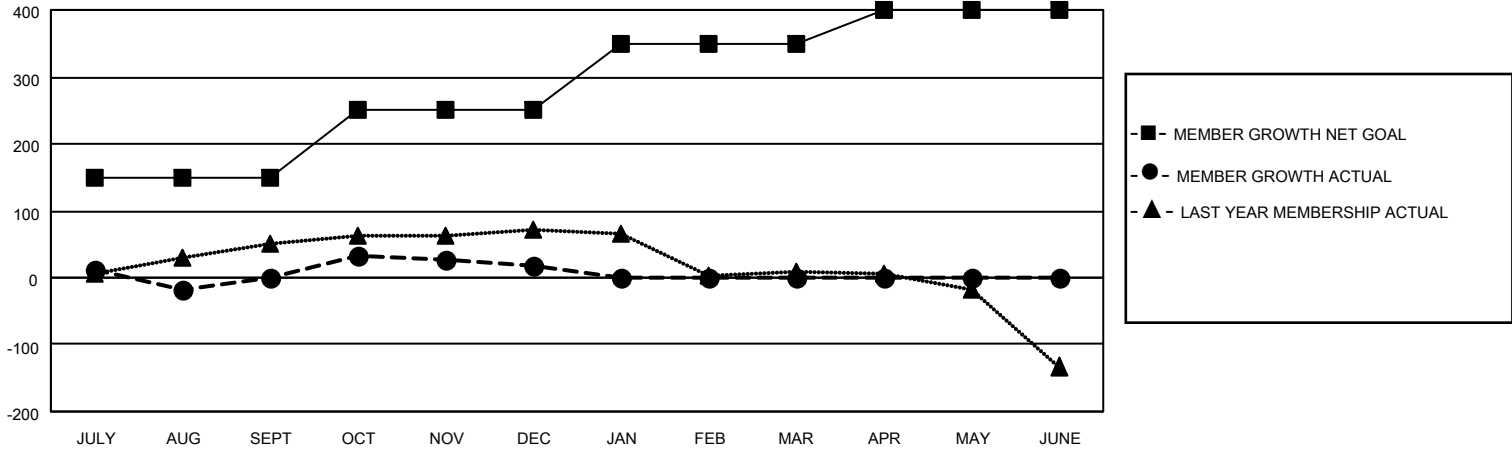
Clubs			
RESULTS FOR 2021-2022			
QUARTER	NEW CLUB GOAL	NEW CLUBS	DROPPED CLUBS
JULY/AUG/SEPT	2	1	3
OCT/NOV/DEC	1	1	2
JAN/FEB/MAR	1	0	0
APR/MAY/JUNE	0	0	0

Members			
RESULTS FOR 2021-2022			
QUARTER	MEMBER GROWTH NET GOAL	MEMBER GROWTH ACTUAL	DROPPED MEMBERS ACTUAL (including transfers)
JULY/AUG/SEPT	150	76	75
OCT/NOV/DEC	100	111	92
JAN/FEB/MAR	100	0	0
APR/MAY/JUNE	50	0	0

**GOALS AND ACTUAL NEW CLUBS CUMULATIVE**



**GOALS AND ACTUAL MEMBERS CUMULATIVE**



**DROPPED CLUBS: 5**

**35 CLUBS OF 81 ADDED 1 OR MORE NEW MEMBERS**

**GENDER DISTRIBUTION**

MALE	2,079 (70.91%)
FEMALE	853 (29.09%)
NON BINARY	0 (0.00%)
PREFER NOT TO ANSWER	0 (0.00%)

**DROPPED MEMBERS**

[CLICK HERE FOR CUMULATIVE MEMBERSHIP DATA](#)

DECEASED	7
CLUB CANCELLED	80
OTHER	80
<b>TOTAL</b>	<b>167</b>

TOTAL FAMILY UNIT MEMBERS 1,233

FAMILY MEMBERS PAYING HALF DUES 690